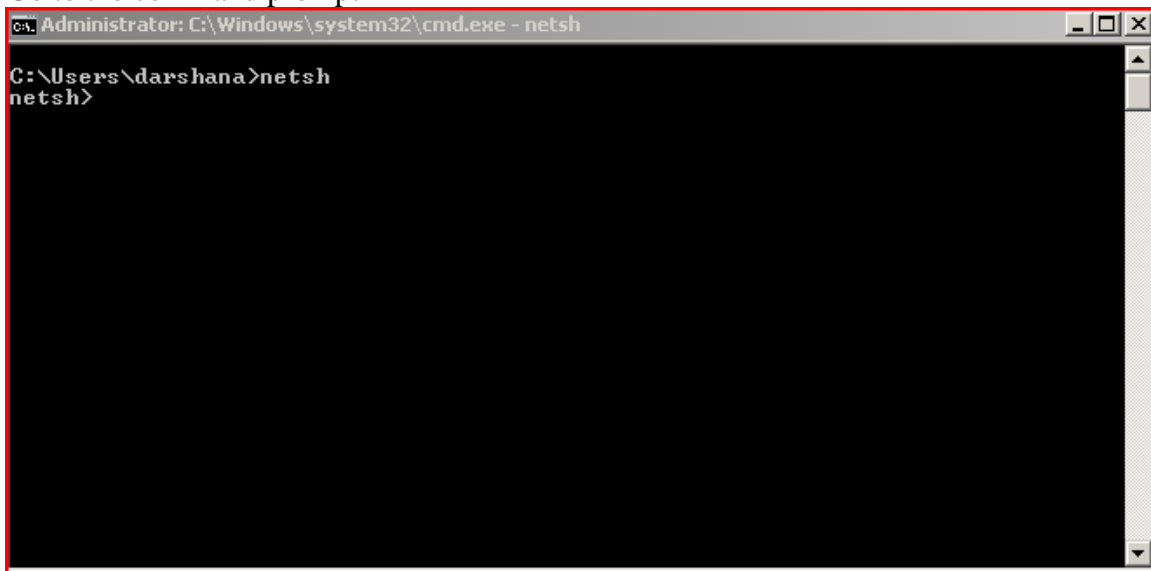


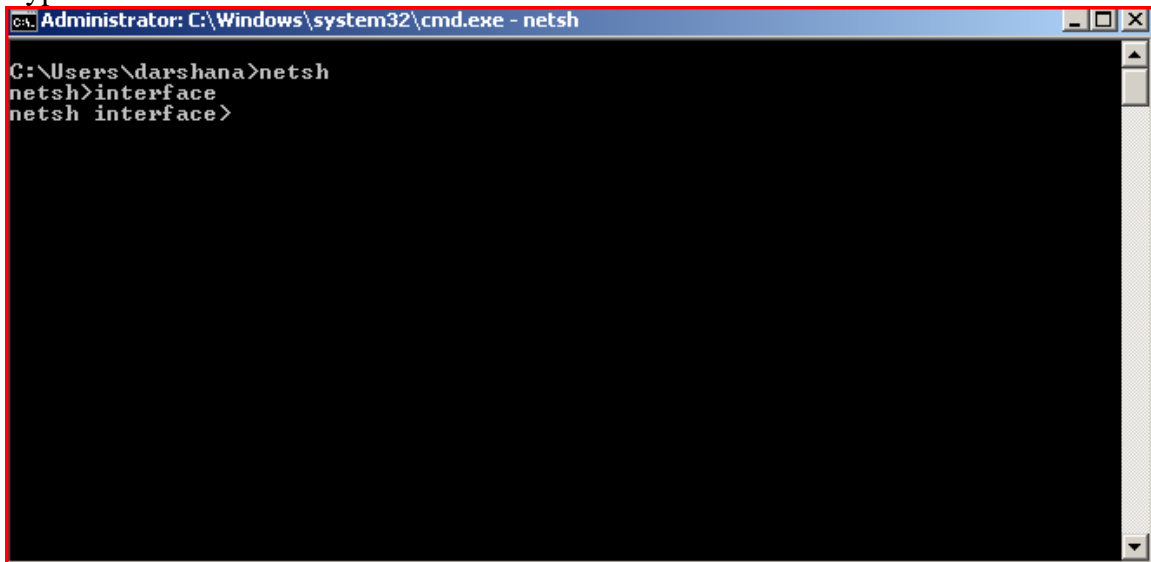
Add Delete IP address through command prompt

Go to the command prompt



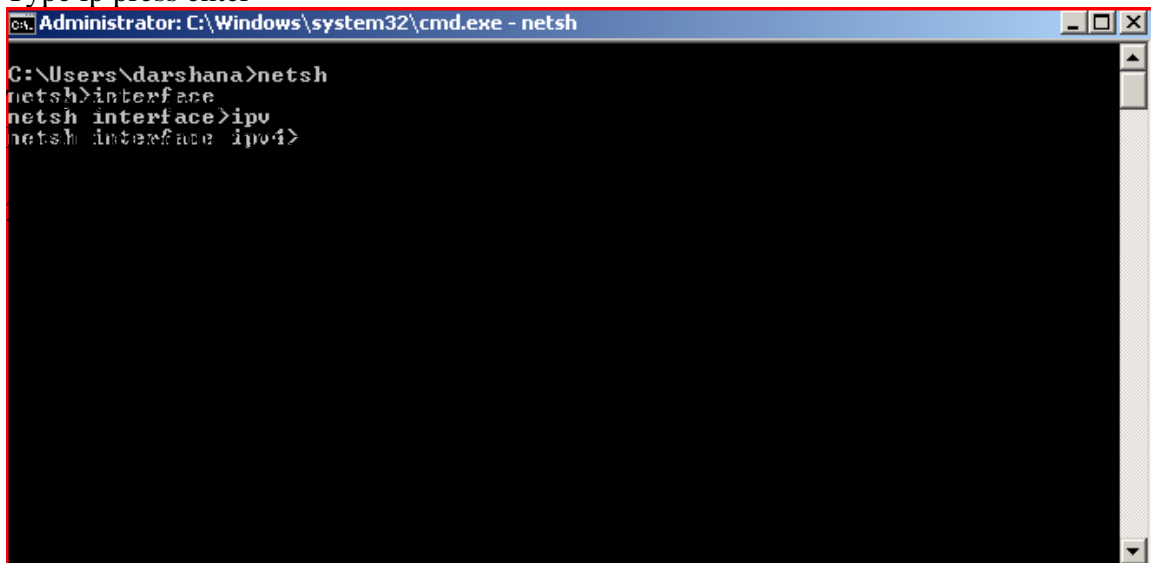
```
C:\Windows\system32\cmd.exe - netsh
C:\Users\darshana>netsh
netsh>
```

Type interface



```
C:\Windows\system32\cmd.exe - netsh
C:\Users\darshana>netsh
netsh>interface
netsh interface>
```

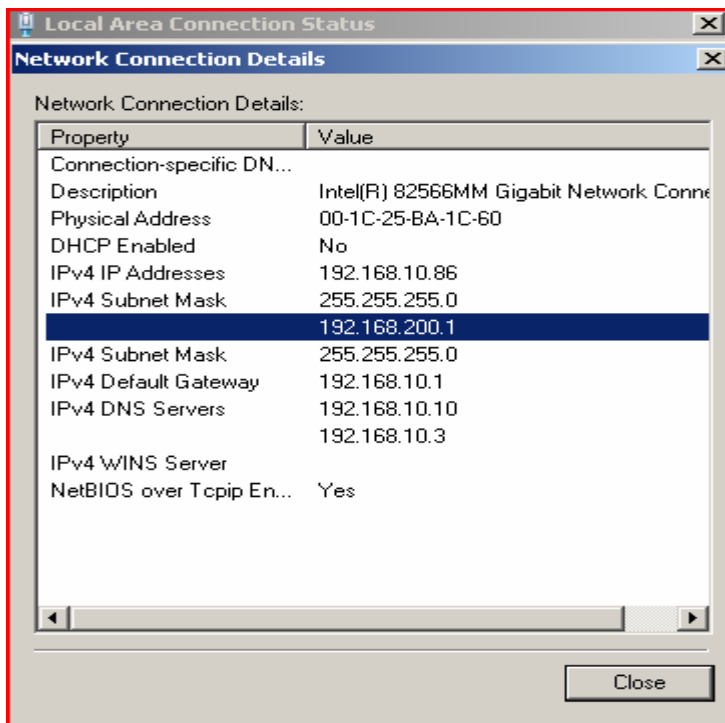
Type ip press enter



```
C:\Windows\system32\cmd.exe - netsh
C:\Users\darshana>netsh
netsh>interface
netsh interface>ipv
netsh interface ipv4>
```

```
C:\Users\darshana>netsh
netsh>interface
netsh interface>ipv4
netsh interface ipv4>add address "local area connection" 192.168.200.1 255.255.255.0
netsh interface ipv4>
```

To view your result go to the network connection



Darshana Jayathlake
Support Engineer-Microsoft
Sumathi Information technologi
No9,1st floor,
School Lane
Colombo 02